

## An Integrated Circuit Functional Tester for the ALTO

This version plugs into an ALTO II in locations 5, 6, or 7. Some jumpers are required on the backplane.

For tentative rework do

build/r/t \g X/r ATester\*.sil RouteAUB.br/gb

Where X is the revision letter

To update wirelist and make rework file, do

build/r \g X/r ATester\*.sil RouteAUB.br/gb

<b>XEROX</b> PARC	<i>Project</i> Tester	<i>Reference</i>	<i>File</i> ATester01.sil	<i>Designer</i> J. Roylance	<i>Rev</i> D	<i>Date</i> 9/07/79	<i>Page</i> 01
----------------------	--------------------------	------------------	------------------------------	--------------------------------	-----------------	------------------------	-------------------

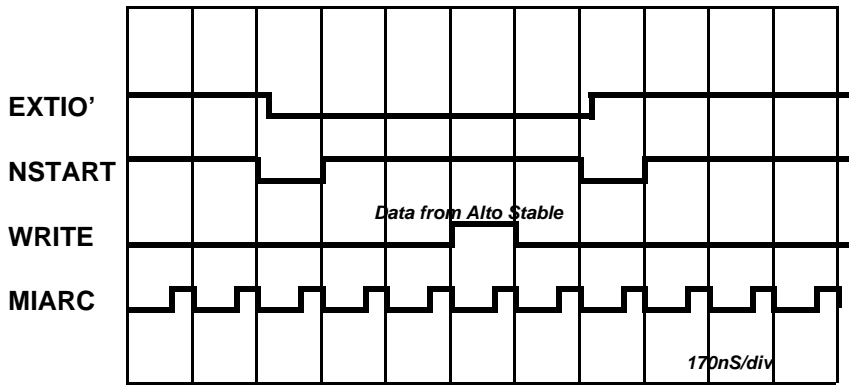
This list is nowhere near complete

Parts List

02 LS175  
01 LS373  
02 LS138  
08 CMOS373  
08 LS374  
01 LS30  
04 N38  
02 Alto Edge Connectors  
01 Forty pin ZIF Socket  
17 PLATS  
  
128 2K 0.25W resistors  
01 5Volt power supply

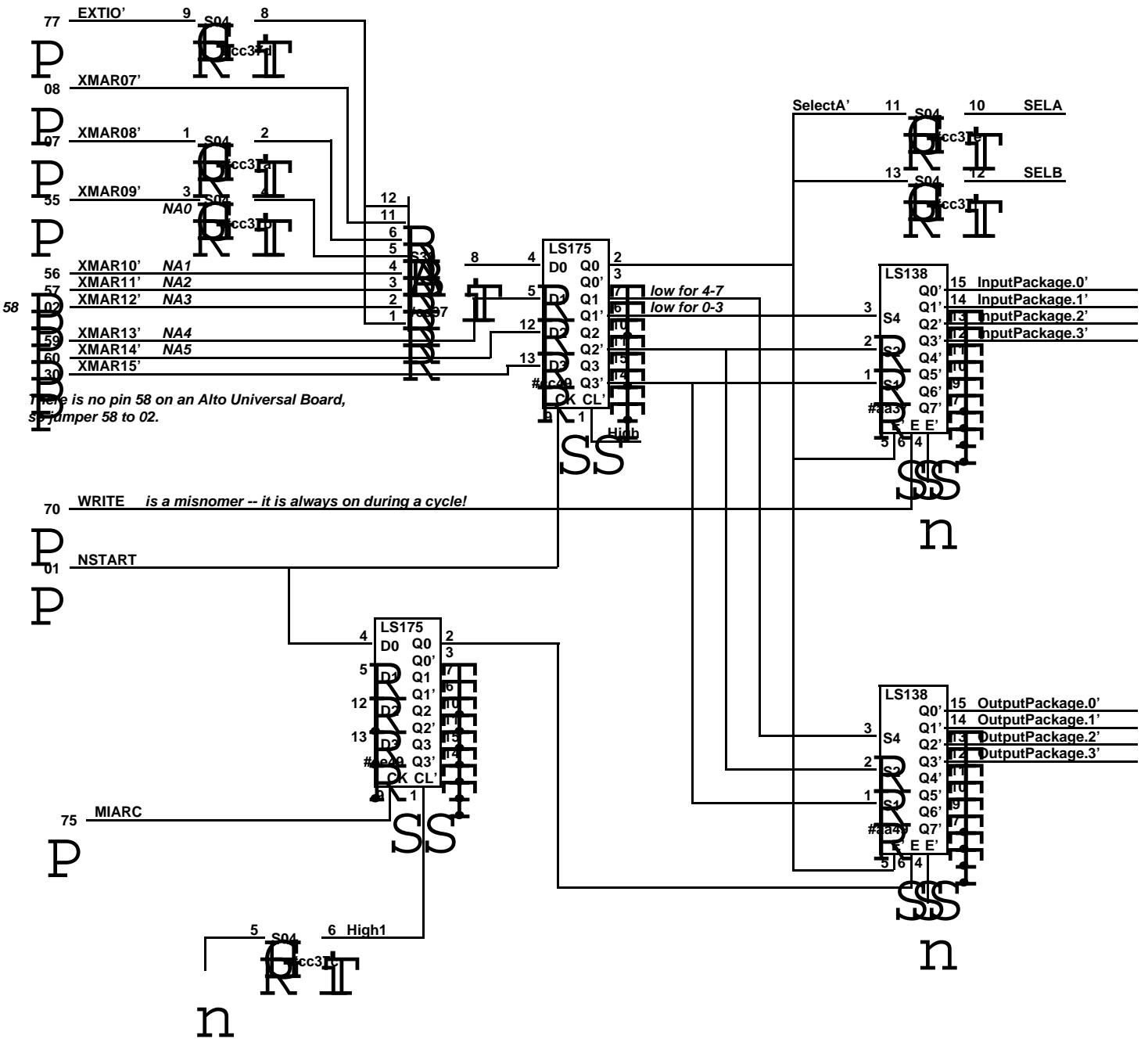
-- capacitors

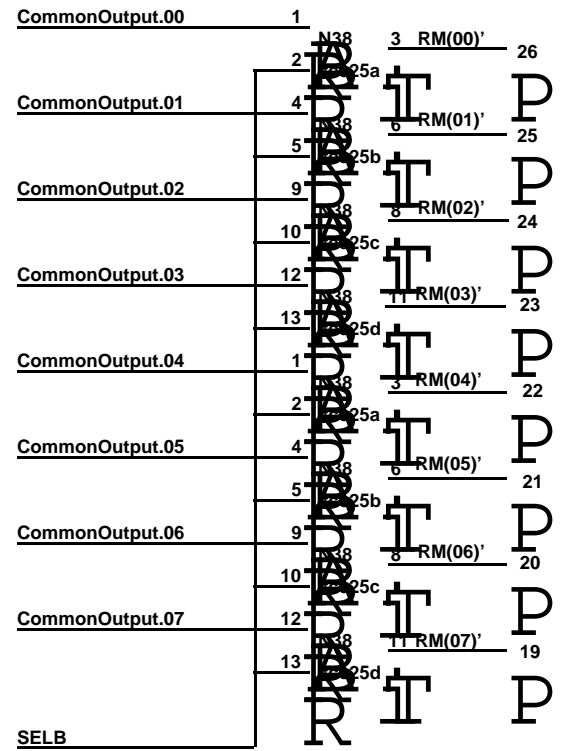
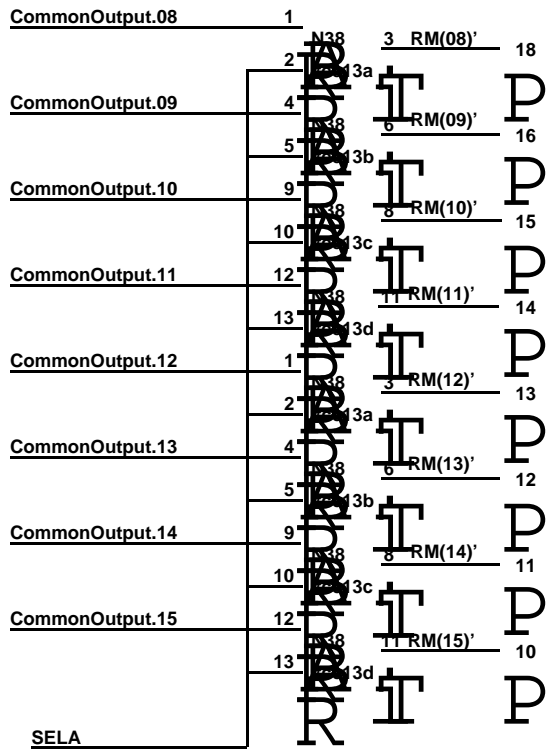
<b>XEROX</b> PARC	<i>Project</i> Tester	<i>Reference</i> Alto Interface IC Tester	<i>File</i> ATester02.sil	<i>Designer</i> J. Roylance	<i>Rev</i> D	<i>Date</i> 9/07/79	<i>Page</i> 02
----------------------	--------------------------	--	------------------------------	--------------------------------	-----------------	------------------------	-------------------

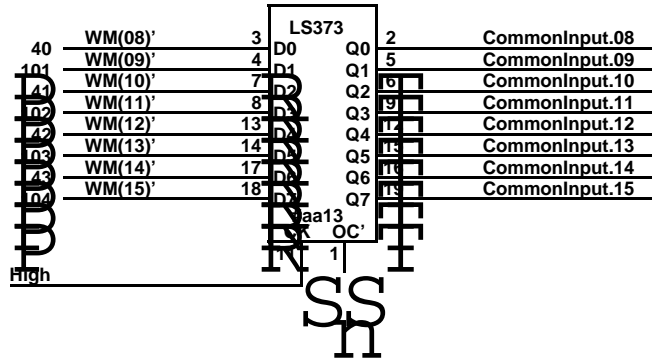
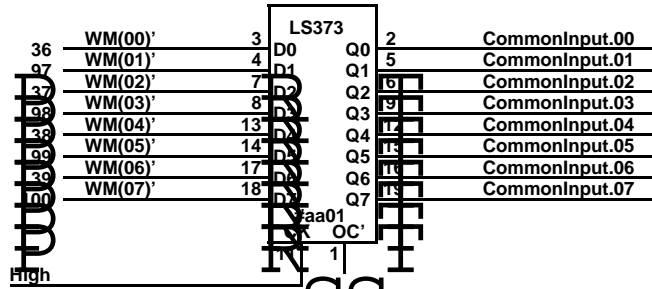


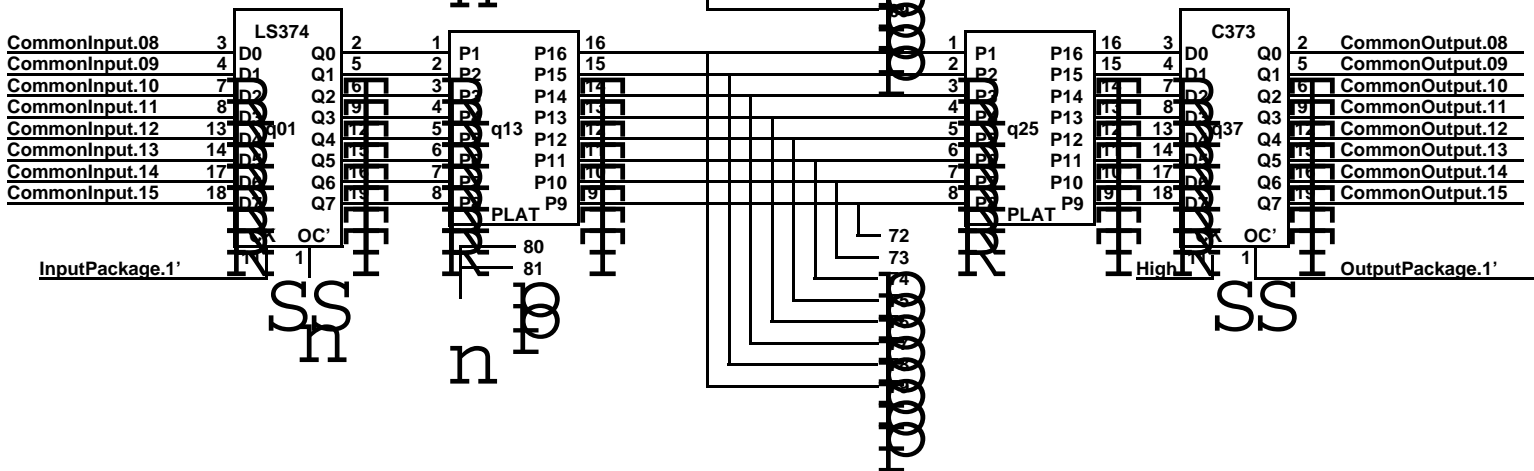
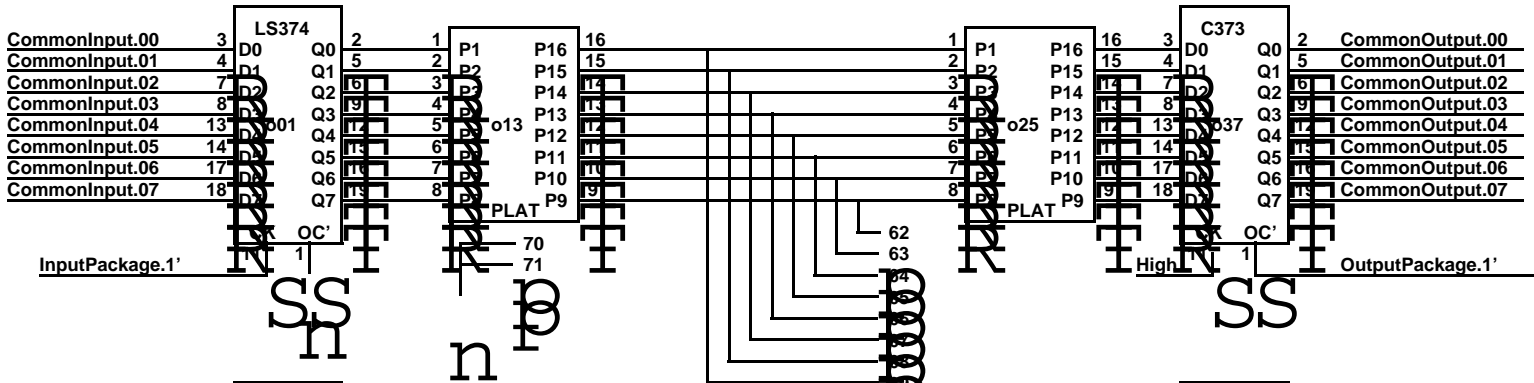
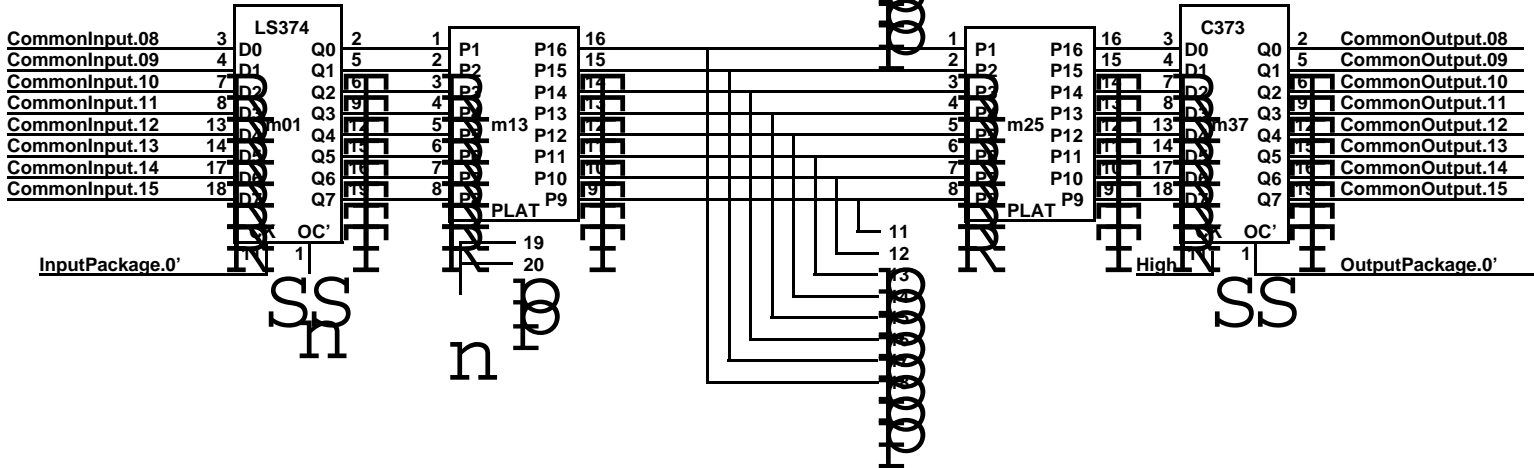
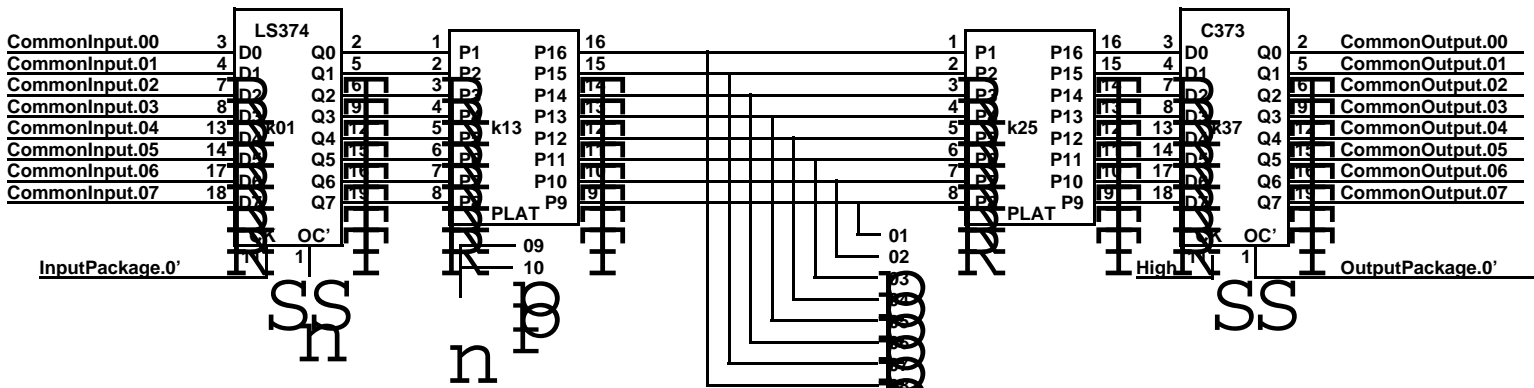
Goodies happen on rising edge.  
NStart is edge pin 1

CZAR David Boggs gave us locations 177300 - 177307

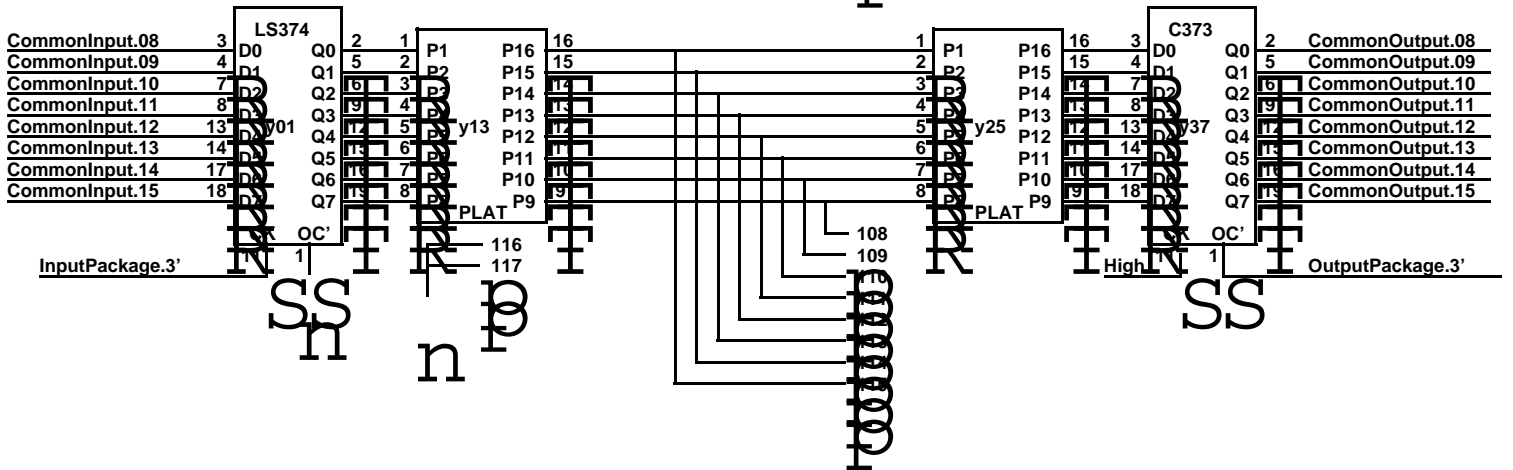
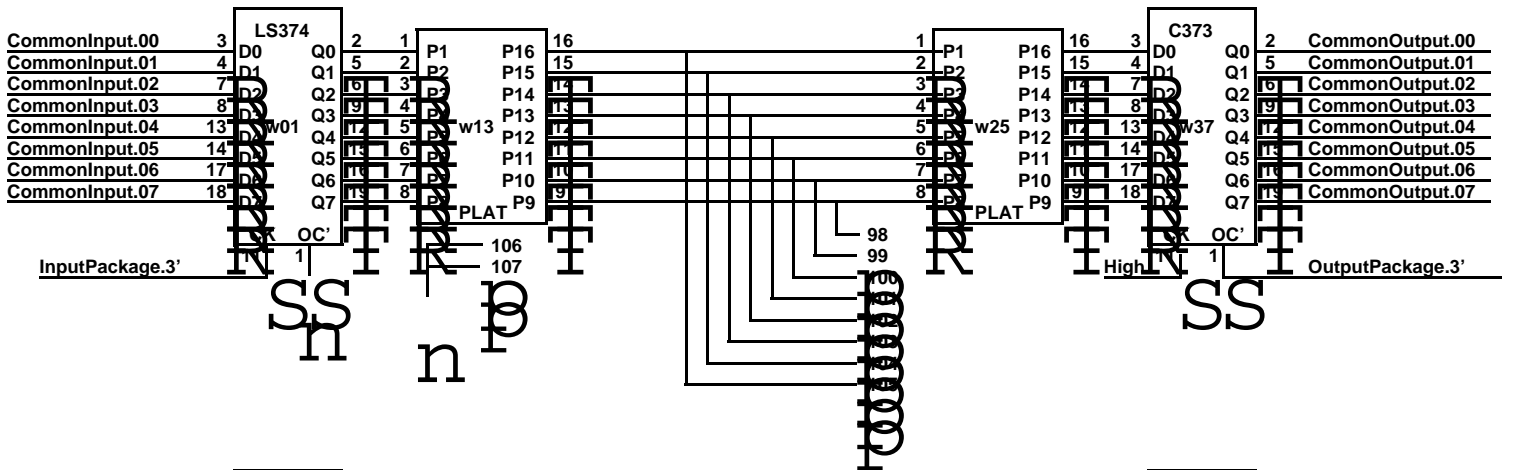
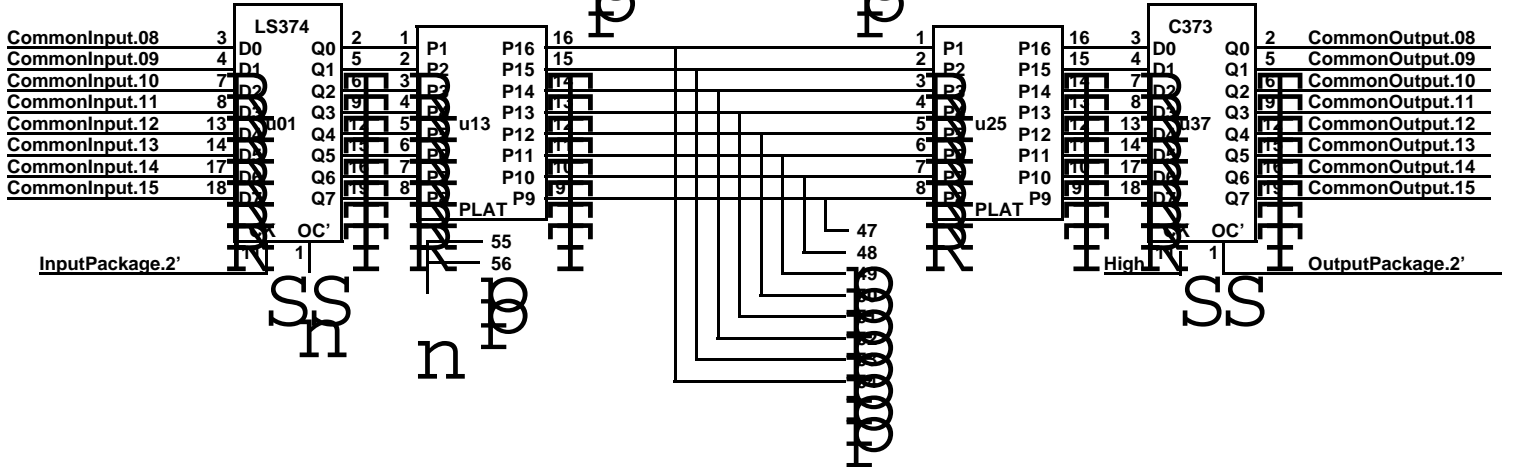
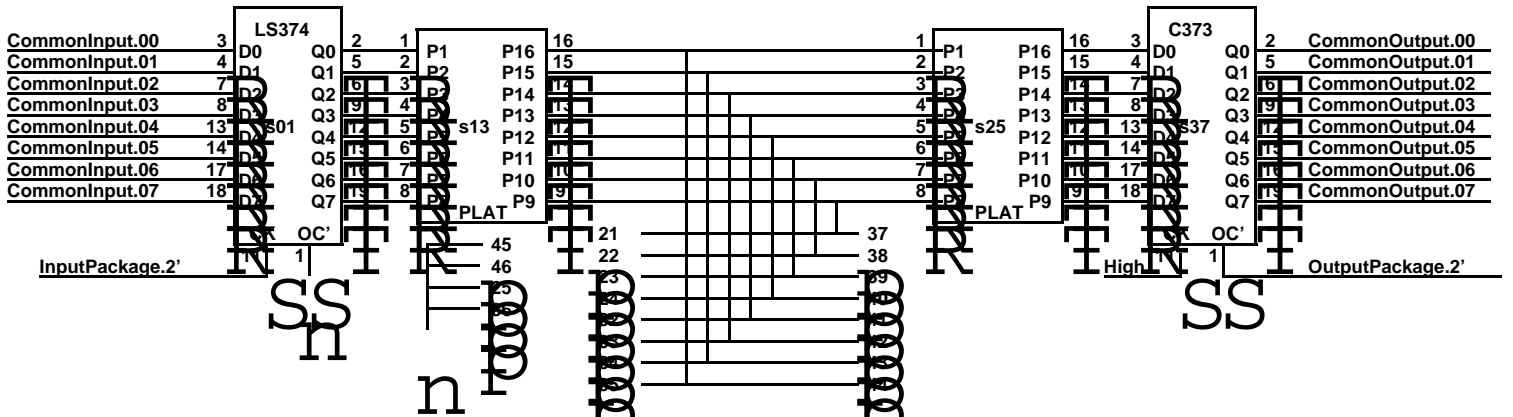




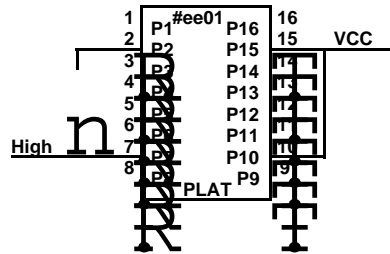
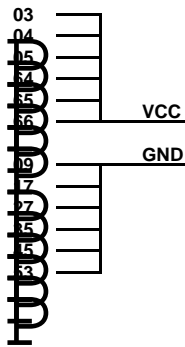




The Platforms are stuffed with 2K Resistors.



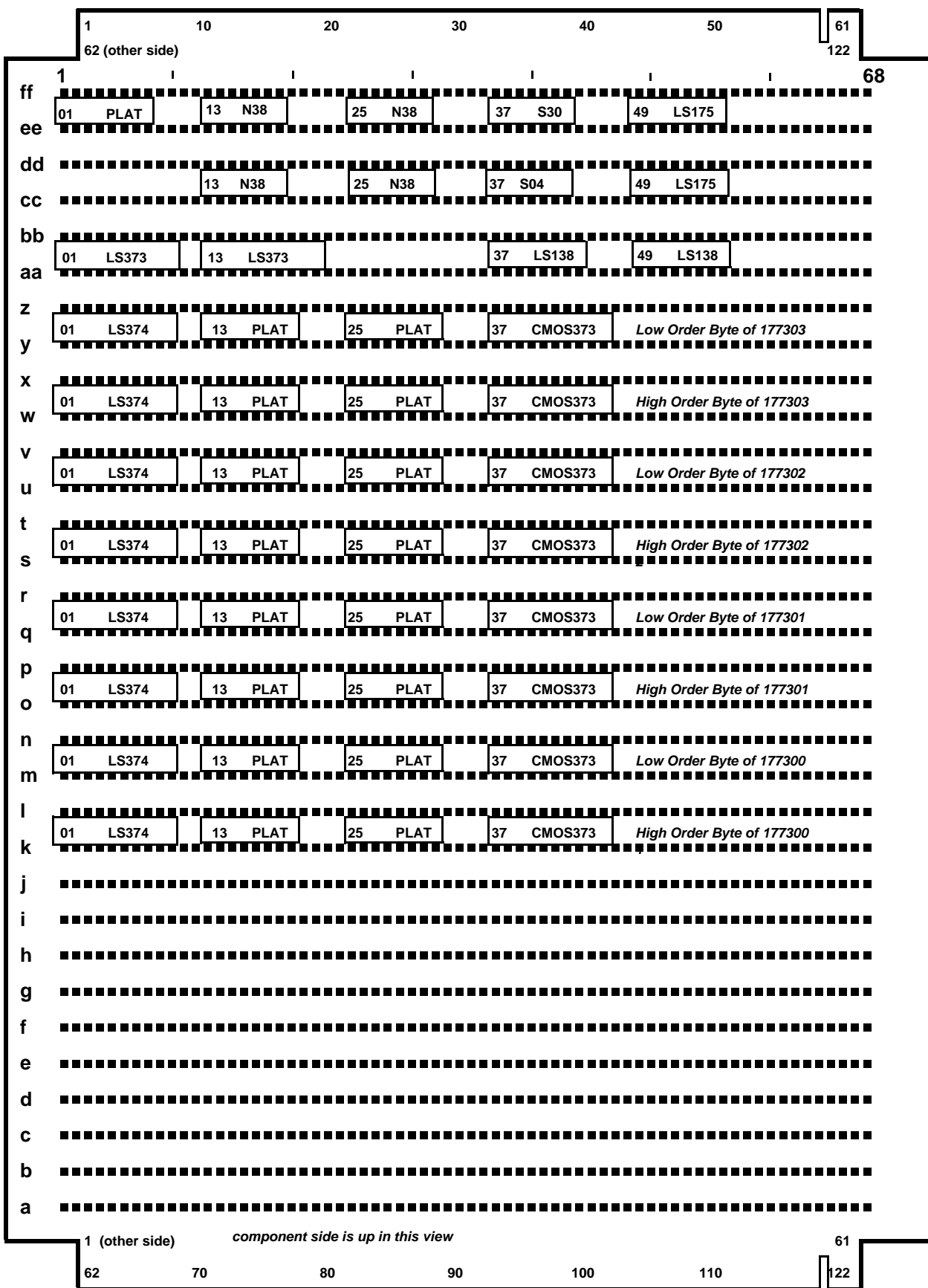
## Bypass Capacitors



Stuff a 22 microfarad capacitor from 2 to 15  
1 kilohm pullup from 7 to 10



# EDGE CONNECTOR



# CABLE CONNECTOR

f  
F

s  
S

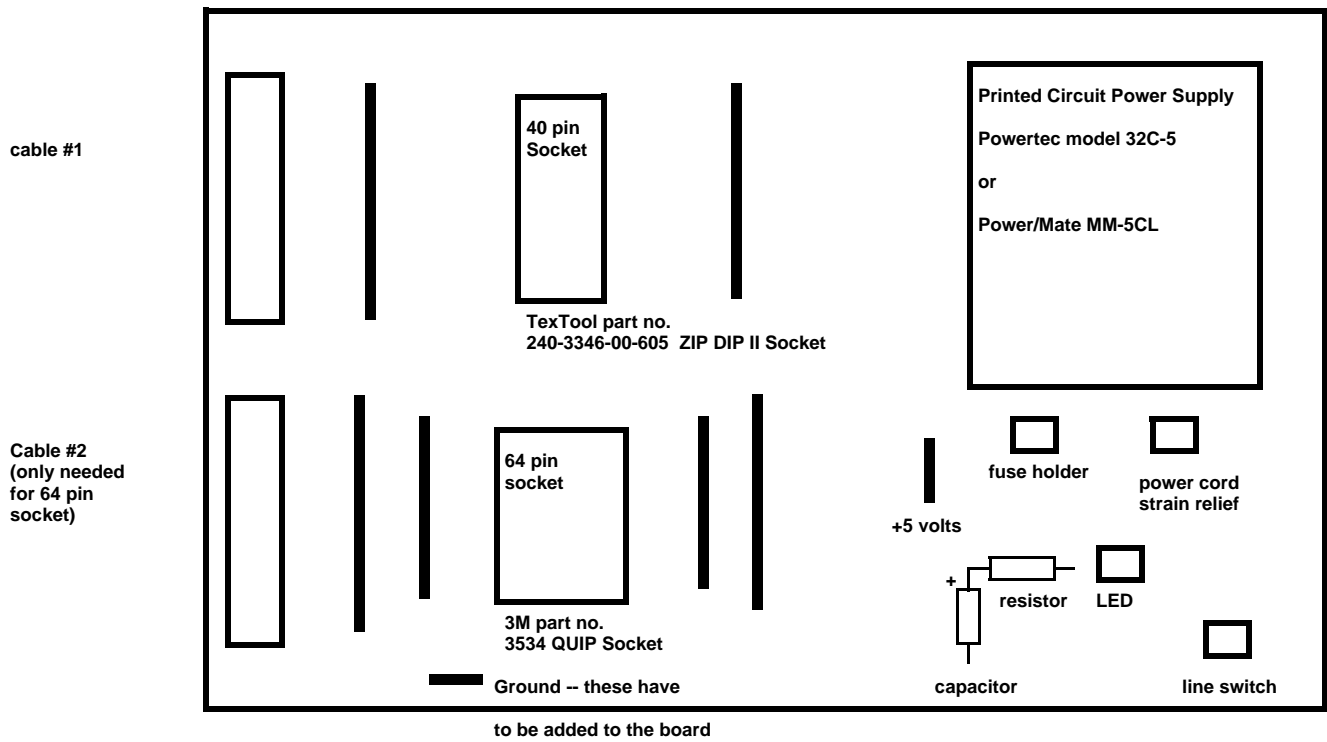
t

*component side ground plane  
other side +5 plane*

rows of wire wrap pins  
that sikk up through the board

(2) 50 pin ribbon cables connect to the Alto  
uses (4) 3M Scotchflex part number  
3425-0000 Socket Connectors

Printed Circuit Board is 7 x 9 inches  
It is mounted on a 7 x 9 x 2 chassis, Bud Radio AC-406



(2) 50 pin headers  
3M Scotchflex part number  
3496-2002 Solder Tail Headers

